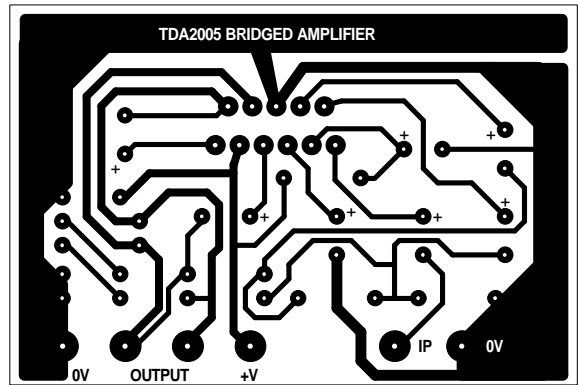
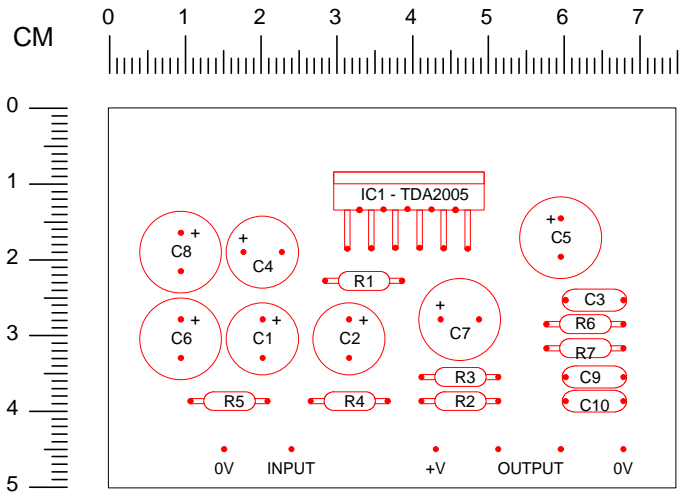


TDA2005 BRIDGED 20 WATT AMPLIFIER

This is a standard circuit for this IC. The advantage it has over other amplifiers is that it works on a 12 volt supply. At 12v the output is around 6 Watts @ 1% distortion into a 4 ohm speaker.

For more information, refer to the TDA2005 datasheet.

Board size: 75mm x 50mm



- R1 = 120K
- R2 = 1K
- R3 = 2K
- R4 = 12
- R5 = 12
- R6 = 1
- R7 = 1

- C1 = 2.2u
- C2 = 2.2u
- C3 = 100n
- C4 = 10u
- C5 = 100u
- C6 = 220u
- C7 = 100u
- C8 = 220u
- C9 = 100n
- C10 = 100n
- C11 = 100u

