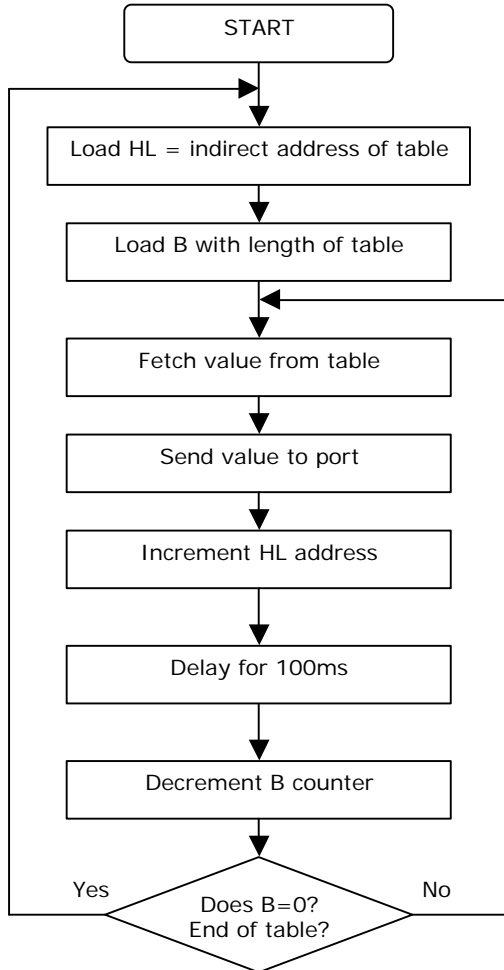


EZ-CPU CONTROL SYSTEM

CONTROLLING OUTPUTS - 2

PROGRAM: LIGHT SEQUENCER	IP MODULE: -
DESCRIPTION: Sends a series of values to the output port to form a running light pattern.	OP MODULE: -
	CPU SPEED: 1 KHz

Using indirect addressing, a list or table of values can be sent to the output port.



ADDR	INSTRUCTION	CODE
00	LD HL,0x80	21 80 00
03	LD B,16	06 10
05	LD A,(HL)	7E
06	OUT (0xFF),A	D3 FF
08	INC HL	23
09	LD A,50	3E 19
0B	DEC A	3D
0C	JR NZ -3	20 FD
0E	DEC B	05
0F	JR NZ -12	20 F4
11	JR -19	18 ED

DATA TABLE								
Table length = 14 bytes								
ADDR	DATA							
80	01	03	07	0F	1F	3F	7F	FF
88	FE	FC	F8	F0	E0	C0	80	00

Change these values to create your own light patterns. Remember if you add bytes you will have to alter the table length set in register B, (address 0x04)